

## PEER-BASED RECOVERY SERVICES

### Peer Support Connection Warmline of Minnesota

Confidential and anonymous one-to-one peer support from trained Peers, Certified Peer Support Specialists and Recovery Coaches.

Available 5pm to 9am (7 days a week/365 days a year)

- **Phone:** 844-739-6369
- For more information, including information on the Virtual Peer Support Network available on Zoom, visit [www.mnwitw.org](http://www.mnwitw.org)

### Recovery Alliance Duluth (RAD)

RAD connects individuals seeking or experiencing recovery from substance use issues to others who have walked a similar path through peer-to-peer recovery support.

We are a Recovery Community Organization that supports all pathways to recovery. Our trained Peer Recovery Specialists provide flexible, voluntary, non-clinical and confidential services.

- **Phone:** 218-576-6005
- [www.recoveryallianceduluth.org](http://www.recoveryallianceduluth.org)

## INDIVIDUALS AT RISK FOR INCARCERATION

### Duluth Police Substance Use Response Team (SURT)

Mon-Fri, 8am-4:30pm

SURT offers Peer Recovery and mobile comprehensive assessments to individuals in St. Louis, Carlton and Lake counties. SURT helps people access recovery support services, including transportation to and from appointments. Referrals can be made by email or phone.

- **Phone:** 218-730-4009
- **Email:** [surt@duluthmn.gov](mailto:surt@duluthmn.gov)

## EMERGENCY SHELTER SERVICES

### Bill's House

210 3rd St. N, Virginia, MN 55792

- **Phone:** 218-741-2063

### Home on the Range

2313 3rd Ave E, Hibbing, MN 55792

For single/one person occupancy

- **Phone:** 612-688-7709

For Family or Domestic Violence

- **Phone:** 612-688-7678

### Life House

Supportive services for homeless and struggling youth ages 14 to 24 in Duluth, MN.

- **Phone:** 218-722-7431
- **Email:** [info@life-house.org](mailto:info@life-house.org)

Funded by the State of Minnesota. 03/2025

## NORTHERN ST. LOUIS COUNTY CRISIS AND RECOVERY RESOURCES

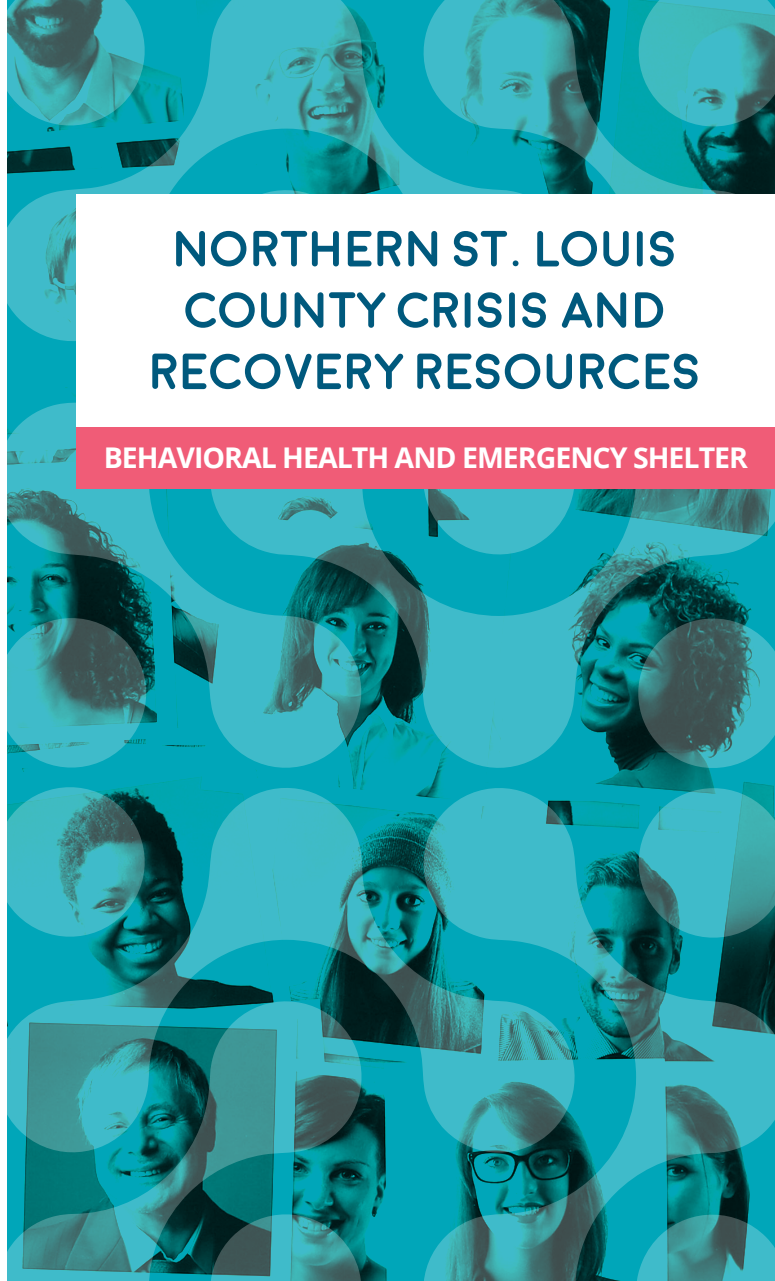
BEHAVIORAL HEALTH AND EMERGENCY SHELTER



# abhi

ARROWHEAD behavioral health initiative

[abhimn.org](http://abhimn.org)



## PHONE. TEXT. EMAIL AND CHAT

*All services are 24 hours unless otherwise specified.*

### Arrowhead Regional Crisis Line

Connects directly to local area resource.

Available to all ages.

- **Phone:** 844-772-4724
- **Chat:** [www.firstcall211.net](http://www.firstcall211.net)

### 988 Suicide and Crisis Lifeline

- **Phone/Text:** 9-8-8
- **Chat:** [www.988lifeline.org/chat](http://www.988lifeline.org/chat)

### Veterans Crisis Line

- **Phone:** 9-8-8 and Press 1

### Crisis Text Line

- **Text:** 9-8-8

### Minnesota Farm and Rural Helpline

- **Phone:** 833-600-2670
- **Text:** Text "FARMSTRESS" to 898211

## IN-PERSON RESPONSE AND RESIDENTIAL CRISIS STABILIZATION

### Mobile Crisis In-Person Response

Call the Arrowhead Regional Crisis Line to access Mobile Crisis Response. The mobile crisis team serves adults and children 24/7 by providing on-site assessments at a common entry point in the community to persons experiencing a mental health crisis. A mental health crisis is defined as a non-life-threatening situation in which an individual is experiencing emotional disturbance or behavioral distress.

- **Phone:** 844-772-4724

### Compassionate Community Response

CCRT will co-respond with law enforcement or EMS, or will assist community agencies when mental health or bio-psych-social needs that arise. Examples include homelessness, last resort transportation needs, food insecurity, mental health needs, substance use needs and other areas that first responders may not be able to address.

- **Phone:** 844-772-4724

### Mental Health Crisis Residential

(Short-term 2- to 10-day Crisis Residential)

Wellstone Center, Virginia, MN

- **Phone:** 218-471-4327

Birch Tree Center, Duluth, MN

- **Phone:** 218-623-1800

New Leaf Healing Center, Cohasset, MN

- **Phone:** 218-999-0092
- **Cell:** 218-256-8654

Yellow Leaf Support Center, Duluth MN

- **Phone:** 218-740-5300

Valley Pine Center, International Falls

- **Phone:** 218-283-3406

## WITHDRAWAL MANAGEMENT AND SUBSTANCE USE DISORDER TREATMENT

### Partners Behavioral Healthcare

Partners Behavioral Healthcare provides Medication-Assisted Treatment (MAT) and has Psychiatric Nurse Practitioners (Psych NPs) to help assess patients. Providers monitor and prescribe medications and provide ongoing support to help patients overcome addiction. We also help manage anxiety and depression co-occurring with substance use disorders.

- **Phone:** 888-648-7652

### Range Detoxification Service

Range Detoxification Service is a 24-hour clinically monitored, short-term stabilization program for acutely intoxicated individuals. It is staffed by licensed nurses, chemical dependency counselors and unit assistants. This is not a locked unit.

- **Phone:** 218-741-9120 or 800-450-7826

### CADT Detox/Withdrawal Management Unit, Duluth, MN

Available 24/7

- **Phone:** 218-529-3455

### Clearpath Opioid Treatment

#### Program (Methadone) Duluth, MN

Mon-Fri 5:30am to 1:30pm, Sat 6am to 9:30am

- **Phone:** 218-529-1188

## BEHAVIORAL HEALTH URGENT CARE

810 E. 4th Street, Duluth MN

(alley entrance between 3rd & 4th St.)

Monday – Friday 8:00 AM – 8:00 PM

- **Phone:** 218-728-4491

Onsite services available from:

The Human Development Center (HDC)

The Center for Alcohol and Drug Treatment (CADT)

and Children's Dental Services (CDS)